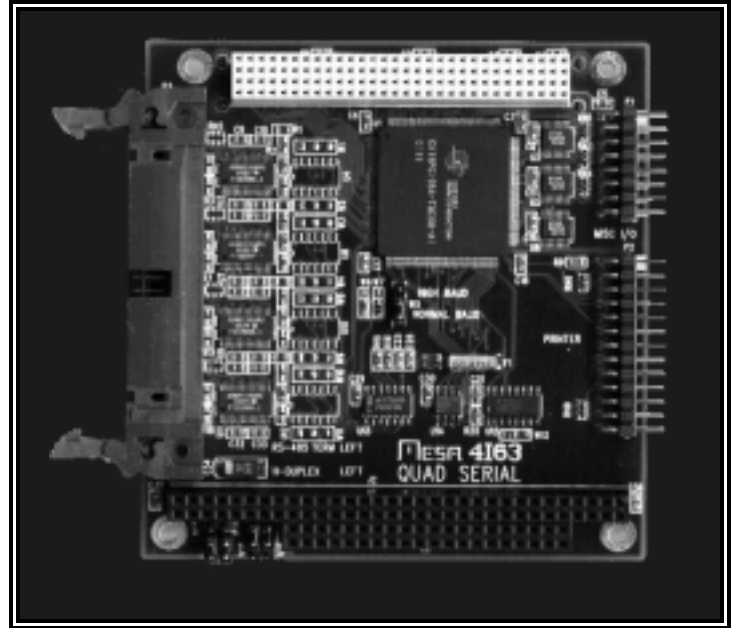


4I63 PC104-PLUS QUAD SERIAL

- Quad COMx compatible serial ports
- High performance PCI based serial
- 128 Byte receive and transmit FIFOs
- Baud rates to 3.6864M baud
- 5V only operation
- Automatic hardware flow control
- Automatic software flow control
- Automatic RS-485 direction control
- Standard printer port
- 11 Miscellaneous I/O bits
- 40 pin latching header for serial I/O
- 4x RS-232, 4x RS-422/485 or 2 and 2
- Made in USA - local support
- 2 year warranty



The 4I63 is a low cost - high performance quad asynchronous serial port card in PC/104 plus format (PCI). The 4I63 is available in three versions: quad RS-232, quad RS-422/485, and dual RS-232 + dual RS-422/485.

The 4I63 uses an advanced 16C550 compatible UART with 128 byte receive and transmit FIFOs for higher baud rates and lower interrupt overhead.

The 4I63 UART supports automatic hardware and software flow control. Hardware flow control (RS-232 only) uses the RTS and CTS handshaking lines. Software flow control can use 1 or 2 character Xon and Xoff characters. Xon and Xoff characters are programmable.

RS-422 models support half and full duplex RS-422 and RS-485 modes. The 4I63 UART also supports automatic direction control for half-duplex RS-485 type applications, simplifying RS-485 support software. On card selectable 130 Ohm RS-422/485 termination is provided

Since the 4I63 is a PCI card it has much lower overhead than ISA based serial cards and can support more channels at higher baud rates.

The 4I63 only has one user settable option: a high baud rate option. This option which is most useful in RS-422/485 modes, allows the baud rate generator to be run at 8X normal speed, allowing baud rates up to 3.6864M baud.

The serial I/O connector on the 4I63 is a 40 pin latching header. The pinout is designed so that a flat cable from the 4I63 can easily be terminated with four IDC DE9 type connectors giving the standard AT serial port pinout. All RS-232 and RS-422/485 I/O pins are protected against 15KV ESD transients

The 4I63 has a standard parallel printer port that supports SPP, PS/2, and EPP modes. Printer port connector is a 26 pin .1" header. Intended to be terminated with a standard IDC DB25F connector.

The 4I63 also has 11 uncommitted I/O bits available for any use. Each bit can be programmed to be input or output.

4I63 CONNECTOR PINOUT:

PIN#	RS-232 SIGNAL	RS-422 SIGNAL	PIN#	RS-232 SIGNAL	RS-422 SIGNAL
1	DCD3	GND	21	DCD1	GND
2	DSR3	RXDB3	22	DSR1	RXDB1
3	RXD3	NC	23	RXD1	NC
4	RTS3	NC	24	RTS1	NC
5	TXD3	TXDA3	25	TXD1	TXDA1
6	CTS3	NC	26	CTS1	NC
7	DTR3	RXDA3	24	DTR1	RXDA1
8	RI3	TXDB3	28	RI1	TXDB1
9	GND	GND	29	GND	GND
10	+5V	+5V	30	+5V	+5V
11	DCD2	GND	31	DCD0	GND
12	DSR2	RXDB2	32	DSR0	RXDB0
13	RXD2	NC	33	RXD0	NC
14	RTS2	NC	34	RTS0	NC
15	TXD2	TXDA2	35	TXD0	TXDA0
16	CTS2	NC	36	CTS0	NC
17	DTR2	RXDA2	37	DTR0	RXDA0
18	RI2	TXDB2	38	RI0	TXDB0
19	GND	GND	39	GND	GND
20	+5V	+5V	40	+5V	+5V

ORDERING INFORMATION:

4I63A QUAD RS-232 ADVANCED SERIAL CARD

4I63B DUAL RS-232 + DUAL RS-422/485 ADVANCED SERIAL CARD

4I63C QUAD RS-422/485 ADVANCED SERIAL CARD

Add -I for industrial temperature range.