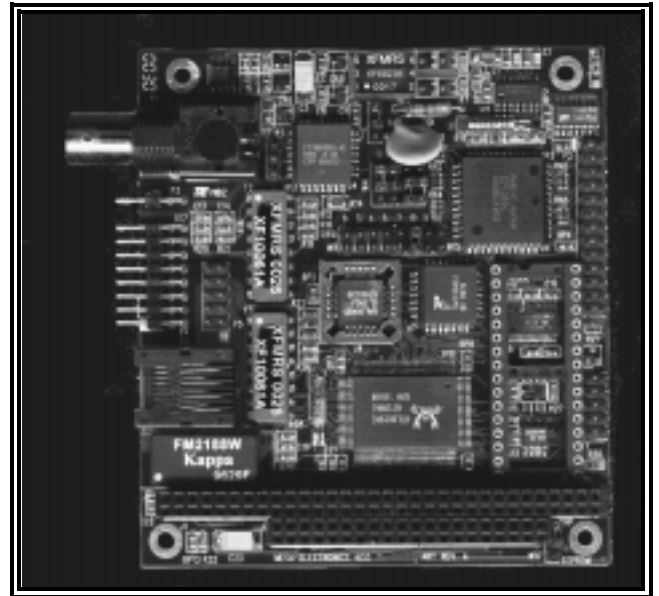


4I33 PC104 ETHERNET + I/O

- 10BaseT/BNC/AUI
- NE2000 compatible
- COMX Serial port RS-232 or RS-485
- 24 Bits of parallel I/O (82C55)
- Flash boot PROM socket
- Remote 10BaseT or BNC option
- Plug and Play or EEPROM setup
- Made in USA - local support
- 2 year warranty
- Industrial temp range available



The 4I33 is a low cost NE2000 compatible Ethernet card for the PC/104 bus that includes an RS-232/RS-485 serial port and 24 parallel I/O bits.

The 4I33 Ethernet is NE2000 compatible and uses the RTL8019AS chipset. It supports both EEPROM configuration and Plug-and-Play modes of operation. 10BaseT, 10Base2 (BNC), and AUI interfaces are provided.

The 4I33 also supports external panel mount 10BaseT or BNC connectors. The panel mount BNC transceiver (MAU) connects to the 4I33's AUI connector. The panel mount 10BaseT connector has link and activity LEDs.

The serial port is a standard COMX compatible port using a 16550 compatible FIFOed UART. The serial port is available with either RS-232 or RS-485 level shifters. The serial port has 4 selectable I/O locations and can use IRQ 2, 3, 4, 5, 7, 9, 10, 11, 12, or 15.

The parallel port uses a 82C55 and provides 24 general purpose I/O bits. All I/O bits are provided with pullup resistors to simplify connection to switches, sensors, etc. The parallel port has 4 selectable I/O port locations.

Like all Mesa cards , the 4I33 has a 2 year warranty and is available in industrial temperature range (-40C >> +85C)

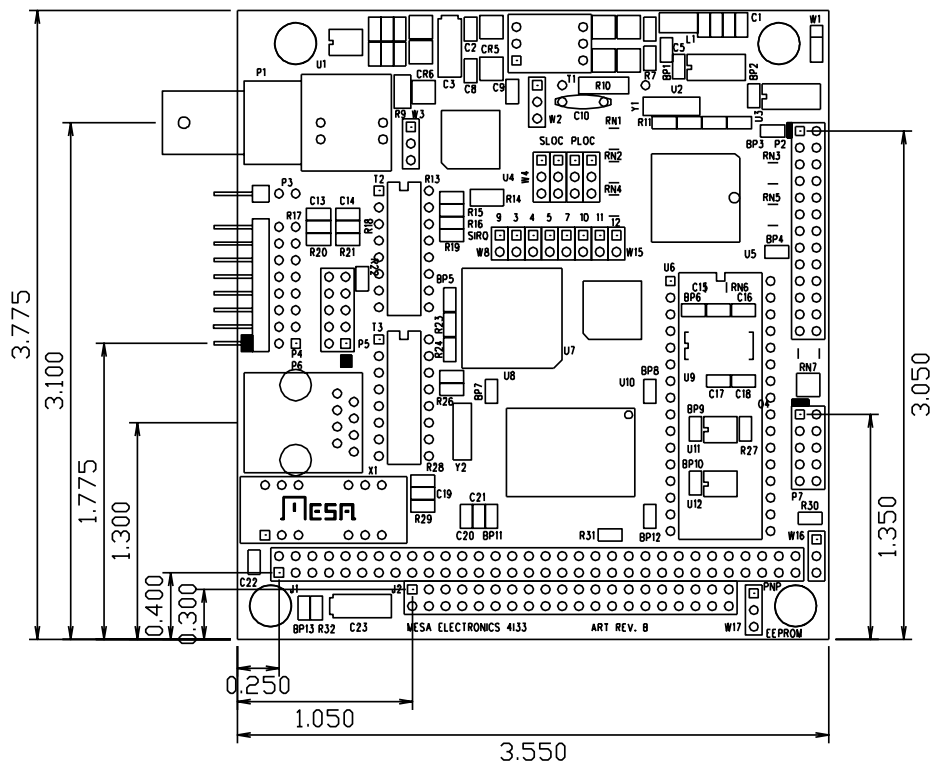
Specifications:

Power Consumption:

4133	450 mA@ 5V	Max
4133-T	150 mA @5V	Max

Operating temperature range:

4133	0 - 70 °C
4133-I	-40 - 85 °C



ORDERING INFORMATION:

Base part numbers:

4133	10BaseT + BNC +AUI
4133-T	10BaseT only
4133-E	With External BNC transceiver
	Add -I for Industrial temperature range