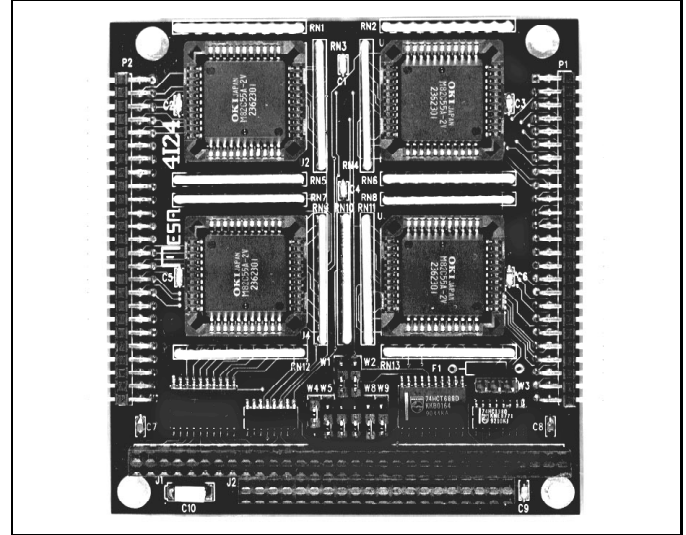




FEATURES:

- 96 and 72 bit parallel I/O
- 3 pinout options
- Pullup resistors on all pins
- Socketed 82C55's
- Any I/O address
- Aliased I/O address capability
- Low power - all CMOS
- Small size
- Made in USA - local support
- 2 year warranty



The MESA 4I24 series of cards are 96 or 72 bit parallel I/O interfaces implemented on the PC/104 bus. The 4I24 uses 4 (4I24, 4I24I) or 3 (4I24M) socketed 82C55 PIO chips to give for a total of 96 I/O bits (4I24, 4I24I) or 72 I/O bits (4I24M). 3.3K Pullup resistors are provided on all ports to simplify interfacing to contact closure, opto-isolators, etc.

The 4I24 series includes three models with different I/O connectors.

The standard 4I24 uses two 50 pin headers for I/O connections. The 50 pin connectors each have 48 I/O bits, ground, and power.

The 4I24I uses four 26 pin headers with ISO standard pinout (24 I/O bits per 26 pin connector, pin 2 = +5V, pin 26= GND).

The 4I24M has I/O module rack compatible pinouts with three 50 pin connectors each having 24 I/O bits with interleaved grounds. 5V power on the I/O connectors is fused on all 4I24 models

The 4I24 card address is selectable anywhere in the 1024 byte range of the PC bus. In addition, higher order addresses can be used to allow aliased addressing, allowing four cards to share the same bus address range. All 4I24 cards use 16 contiguous I/O addresses.

All 4I24 models use the 16 bit stack through type PC/104 bus architecture. Four layer circuit card construction is used to minimize radiated EMI and provide optimum ground and power integrity. All CMOS design keeps power consumption to a minimum.

4I24 SERIES I/O CONNECTOR PINOUTS

PIN	4I24	4I24I	4I24M	PIN	4I24	4I24I	4I24M
1	PA0-0	PA0	PA0/+5V	2	PA1-0	+5V (F)	GND
3	PA2-0	PA1	PA1	4	PA3-0	PA2	GND
5	PA4-0	PA3	PA2	6	PA5-0	PA4	GND
7	PA6-0	PA5	PA3	8	PA7-0	PA6	GND
9	PB0-0	PA7	PA4	10	PB1-0	PB0	GND
11	PB2-0	PB1	PA5	12	PB3-0	PB2	GND
13	PB4-0	PB3	PA6	14	PB5-0	PB4	GND
15	PB6-0	PB5	PA7	16	PB7-0	PB6	GND
17	PC0-0	PB7	PB0	18	PC1-0	PC0	GND
19	PC2-0	PC1	PB1	20	PC3-0	PC2	GND
21	PC4-0	PC3	PB2	22	PC5-0	PC4	GND
23	PC6-0	PC5	PB3	24	PC7-0	PC6	GND
25	PA0-1	PC7	PB4	26	PA1-1	GND	GND
27	PA2-1		PB5	28	PA3-1		GND
29	PA4-1		PB6	30	PA5-1		GND
31	PA6-1		PB7	32	PA7-1		GND
33	PB0-1		PC0	34	PB1-1		GND
35	PB2-1		PC1	36	PB3-1		GND
37	PB4-1		PC2	38	PB5-1		GND
39	PB6-1		PC3	40	PB7-1		GND
41	PC0-1		PC4	42	PC1-1		GND
43	PC2-1		PC5	44	PC3-1		GND
45	PC4-1		PC6	46	PC5-1		GND
47	PC6-1		PC7	48	PC7-1		GND
49	GND		+5V (F)	50	+5V (F)		GND

4I24 SPECIFICATIONS:

POWER REQUIREMENTS:

	Min	Max	Units	Notes
Supply voltage	4.5	5.5	V	
Supply current	----	50	mA	No interface loading

ENVIRONMENTAL:

	Min	Max	Units	Notes
Temperature range -C version	0	+70	°C	
Temperature range -I version	-40	+85	°C	
Relative humidity	0	90	Percent	Non-Condensing

ORDERING INFORMATION:

4I24	96 bit parallel I/O - 2x50 pin - 48 bits per connector	Mesa pinout
4I24I	96 bit parallel I/O - 4x26 pin - 24bits per connector	ISO pinout
4I24M	72 bit parallel I/O - 3x50 pin - 24 bits per connector	I/O module pinout
Add -I to specify industrial temperature range		